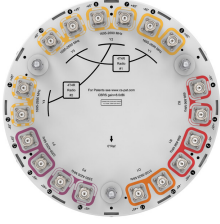


# NNV4SSP-360S-F4-V4



18-port small cell antenna, 4x 698-896, 8x 1695-2690, 4x 3300-4200 and 2x 5150-5925 MHz, 360° Horizontal Beamwidth, fixed tilt.

## General Specifications

<b>Antenna Type</b>	Omni
<b>Band</b>	Multiband
<b>Color</b>	Light Gray (RAL 7035)
<b>Grounding Type</b>	RF connector inner conductor and body grounded to reflector and mounting bracket
<b>Performance Note</b>	Outdoor usage
<b>Radome Material</b>	ASA
<b>Radiator Material</b>	Aluminum   Low loss circuit board
<b>Reflector Material</b>	Aluminum
<b>RF Connector Interface</b>	4.3-10 Female
<b>RF Connector Location</b>	Bottom
<b>RF Connector Quantity, high band</b>	14
<b>RF Connector Quantity, low band</b>	4
<b>RF Connector Quantity, total</b>	18

## Dimensions

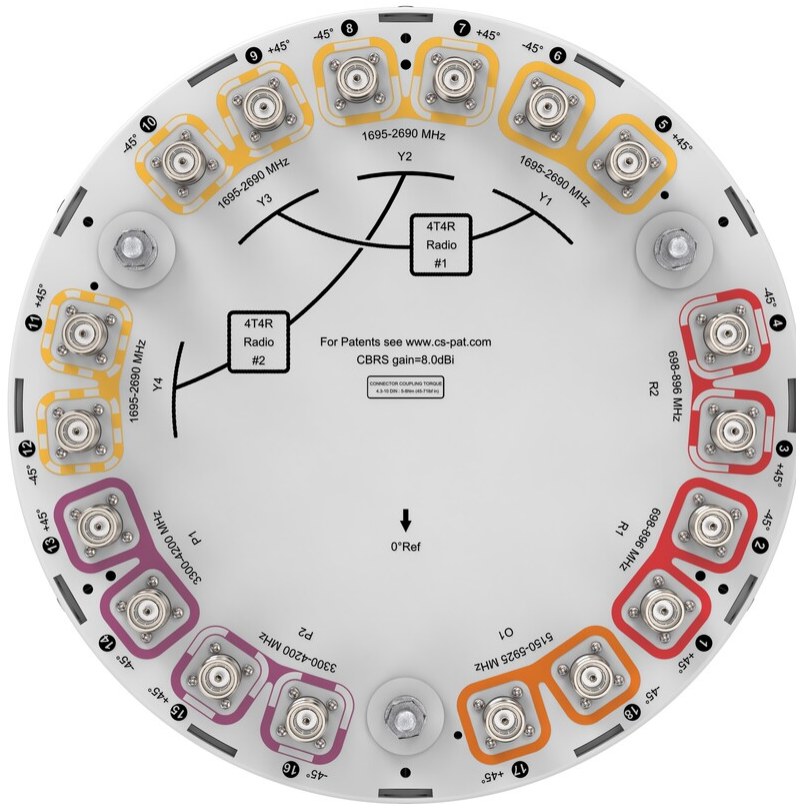
<b>Width</b>	370 mm   14.567 in
<b>Depth</b>	370 mm   14.567 in
<b>Length</b>	680 mm   26.772 in
<b>Net Weight, antenna only</b>	18.1 kg   39.904 lb

## 5 GHz Port Power Table

<b>5 GHz FCC Power Requirements</b>				
<b>U-NII Band</b>	<b>U-NII 1</b>	<b>U-NII 2A</b>	<b>U-NII 2C</b>	<b>U-NII 3</b>
<b>Frequency (MHz)</b>	<b>5150 - 5250</b>	<b>5250 - 5350</b>	<b>5470 - 5725</b>	<b>5725 - 5850</b>
<b>Max Input power per port to align with FCC Title 47 Part 15 (Watts)</b>	<b>0.5</b>	<b>0.125</b>	<b>0.125</b>	<b>0.5</b>

## Port Configuration

# NNV4SSP-360S-F4-V4



## Electrical Specifications

<b>Impedance</b>	50 ohm
<b>Operating Frequency Band</b>	1695 – 2690 MHz   3300 – 4200 MHz   5150 – 5925 MHz   698 – 896 MHz
<b>Polarization</b>	±45°
<b>Total Input Power, maximum</b>	1,000 W

## Electrical Specifications

Frequency Band, MHz	698–806	806–896	1695–1920	1920–2180	2300–2360	2360–2690	3300–3550	3550–3700	3700–4200	5150–5925
<b>Gain, dBi</b>	5.4	5.5	7.8	8.2	8	9.1	6.9	7.2	8.1	5.1
<b>Beamwidth, Horizontal, degrees</b>	360	360	360	360	360	360	360	360	360	360
<b>Beamwidth, Vertical, degrees</b>	39.4	36.7	20.1	16.8	14.7	14.3	32.8	33.6	29.5	21.8
<b>Beam Tilt,</b>	4	4	4	4	4	4	0	0	0	0

# NNV4SSP-360S-F4-V4

## degrees

<b>USLS (First Lobe), dB</b>	12	8	15	15	12	11	11	11	7
<b>Isolation, Cross Polarization, dB</b>	25	25	25	25	25	25	25	25	25
<b>Isolation, Inter-band, dB</b>	25	25	25	25	25	25	25	25	25
<b>VSWR   Return loss, dB</b>	1.5 14.0	1.5 14.0	1.5 14.0	1.5 14.0	1.5 14.0	1.5 14.0	1.5 14.0	1.5 14.0	1.5 14.0
<b>PIM, 3rd Order, 2 x 20 W, dBc</b>	-153	-153	-153	-153	-153	-153	-140	-140	-140
<b>Input Power per Port, maximum, watts</b>	125	125	125	125	125	125	100	100	100
<b>Input Power per Port at 50°C, maximum, watts</b>	75	75	75	75	75	75	50	50	50

## Mechanical Specifications

<b>Wind Loading @ Velocity, frontal</b>	144.0 N @ 150 km/h (32.4 lbf @ 150 km/h)
<b>Wind Loading @ Velocity, lateral</b>	144.0 N @ 150 km/h (32.4 lbf @ 150 km/h)
<b>Wind Loading @ Velocity, maximum</b>	144.0 N @ 150 km/h (32.4 lbf @ 150 km/h)
<b>Wind Loading @ Velocity, rear</b>	144.0 N @ 150 km/h (32.4 lbf @ 150 km/h)
<b>Wind Speed, maximum</b>	241 km/h (150 mph)

## Packaging and Weights

<b>Width, packed</b>	478 mm   18.819 in
<b>Depth, packed</b>	464 mm   18.268 in
<b>Length, packed</b>	966 mm   38.032 in
<b>Weight, gross</b>	22.3 kg   49.163 lb

## Regulatory Compliance/Certifications

Agency	Classification
ISO 9001:2015	Designed, manufactured and/or distributed under this quality management system

## \* Footnotes

<b>Performance Note</b>	Severe environmental conditions may degrade optimum performance
-------------------------	---